

**TaskForceCO2 V6 to V7 Upgrade Notes.**  
**For existing TaskForceCO2 Users.**

April 2013

# TaskForceCO2 V7

## **Upgrade Notes Introduction**

This document is for existing users of TaskForceCO2 already familiar with the features of V6 and upgrading to V7.

TaskForceCO2 V7 includes numerous enhancements to the existing software and is easily upgradeable by following this document.

Further information and a copy of TaskForceCO2 V7 can be found at [www.peachworx.com](http://www.peachworx.com)

For Support please email: [support@peachworx.com](mailto:support@peachworx.com)

Date April. 2013. Rev 190413002.

© PeachWorx LLP 2013.

## Installing TaskForceCO2 V7

Before you can use TaskForceCO2 V7, it needs to be installed.

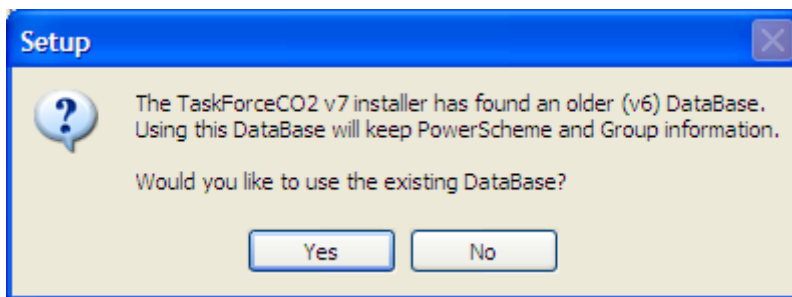
Installation is straight forward and is controlled by an installation program.

Please follow these procedures.

Double Click the Installer File

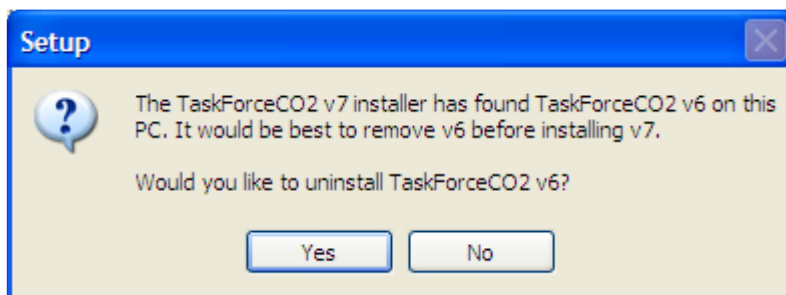
## TaskForceCO2-v7.2.3.exe

When you run the V7 installer TaskForceCO2 will see that you have an earlier Version and offer to use the existing Power Schemes and Group information. It will also take a back up of the DataBase.



Select YES and this will save a copy of the existing DataBase.

It is also best practice to uninstall V6 as it is not practical to operate 2 Versions at the same time for obvious reasons.



Click YES and TaskForceCO2 will delete V6 before continuing with the V7 Install procedure.

## Running V7 for the first time.

The first time you run V7 you will need to go through the Configure Wizard in order to Install the Server Service.

Follow the configure Wizard to install the Server Service



### Updating Clients

When you install TaskForceCO2 V7 you will need to update the Clients on your Remote PCs from the console.

### **Important**

**You can either leave the console open until it has worked through the list of PCs updating the Remote Clients (If you selected Auto Install) or you can highlight blocks of PCs and Uninstall / Install the Remote Client manually.**

**In either case you need to leave the console open until the process is complete.**

You can then leave the scheme already applied or apply new schemes.

## Visible Shutdown Warning.

TaskForceCO2 V7 Power schemes include a 'Visible Shutdown Warning' feature.

When the Visible Shutdown Warning is enabled the user will see an ICON in the Taskbar which shows the next scheduled power event and the time left before it is executed.



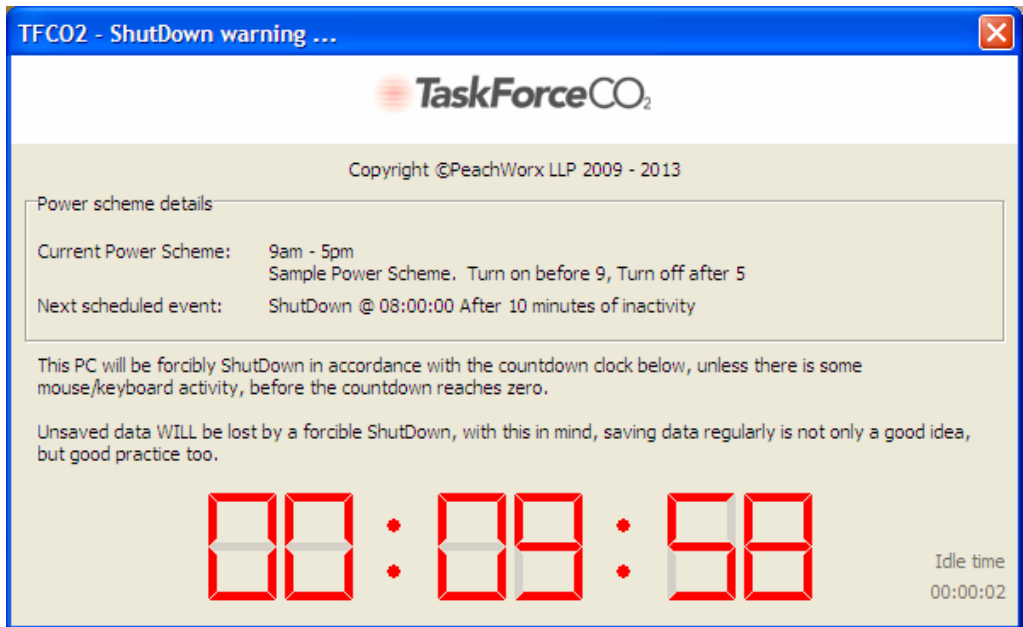
Right Clicking on the Visible Shutdown Icon will display the time of the next scheduled power event and the time left before it is activated.



The Visible Shutdown Warning provides a visible method of letting users know a scheduled power event is imminent and also gives them an opportunity to extend the time without being able to bypass the event.

A Digital Countdown clock will appear 30 minutes and 5 minutes before the designated scheduled power event is due to be activated.

When the 30 minute countdown clock is removed from the screen it will reappear at 5 minutes before the next scheduled power event.



The Idle Time at the bottom right shows how long has elapsed since the mouse or keyboard was last used. This enables a user to see that using the keyboard and mouse extends the time before the scheduled power event takes place.

When there has been no activity for the prescribed period, the scheduled power event will be activated.

## **Brief Summary of Changes to V7**

Many Technical Improvements have been incorporated into V7 along with these additional items.

1	Backup feature to backup Schemes and Group Information
2	CSV data export. Correctly exports and separates all time and date functions for importing into Excel and other reporting programs.
3	Interface changes to include an expandable Group Viewing Pane and data columns.
4	New 'Find PC' option
5	Scheme creation simplified
6	Configure Wizard simplified and initiates only the required options.
7	New Visible Warning Feature shows a hard wired 30 minute and 5 minute warning prior to the scheduled power event taking effect.
8	Taskbar Icon to show the next scheduled power event and elapsed time between scheduled power events.
9	Windows 7 Compatibility.
10	Hibernate function and elapsed time improvements for Windows 7
11	Windows 8 Compatibility
12	Server 2012 Compatibility
13	Numerous technical improvements to the Server Service
14	Numerous Technical improvements to the Remote Client
15	Multiple Power events and interaction with Visible Shut Down.
16	Many general changes and improvements and minor bug fixes.

For Further Information Contact.

PeachWorx LLP  
West One  
Wellington Street  
LEEDS  
LS1 1BA

Email [support@peachworx.com](mailto:support@peachworx.com)