

Troubleshoot Wake On LAN functionality:

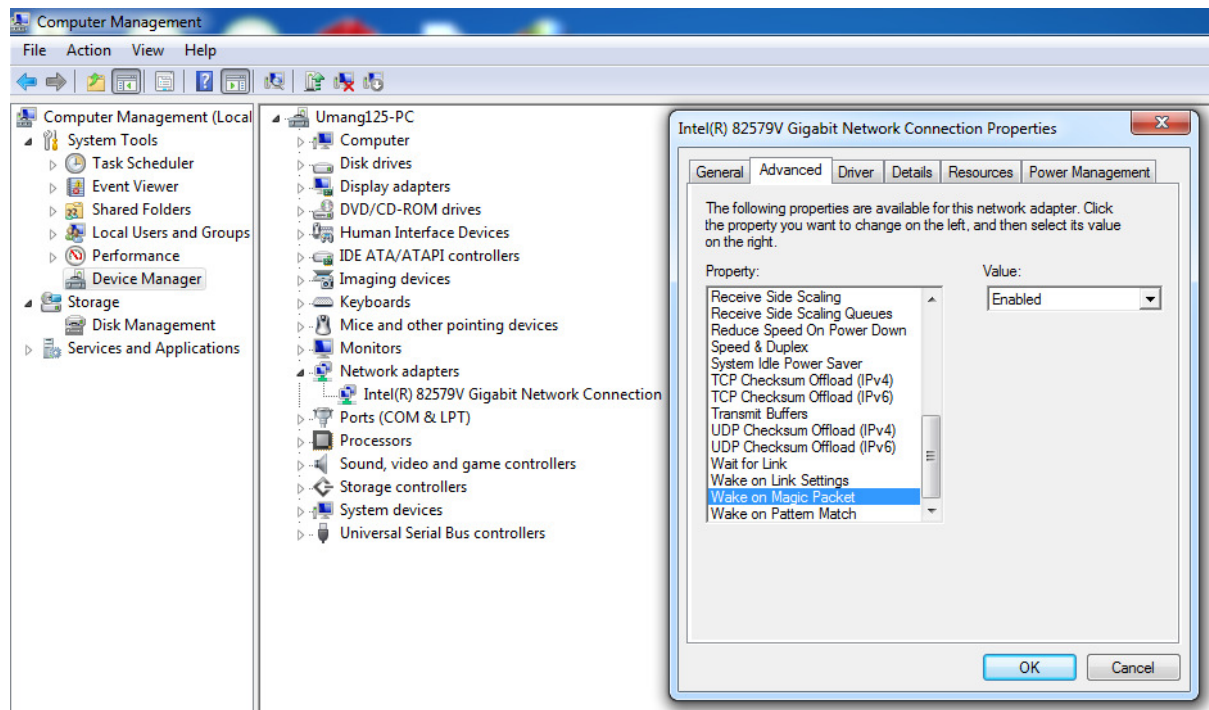
1. Enable Wake On LAN from the BIOS settings.
2. Enable Wake On LAN from the Operating System.

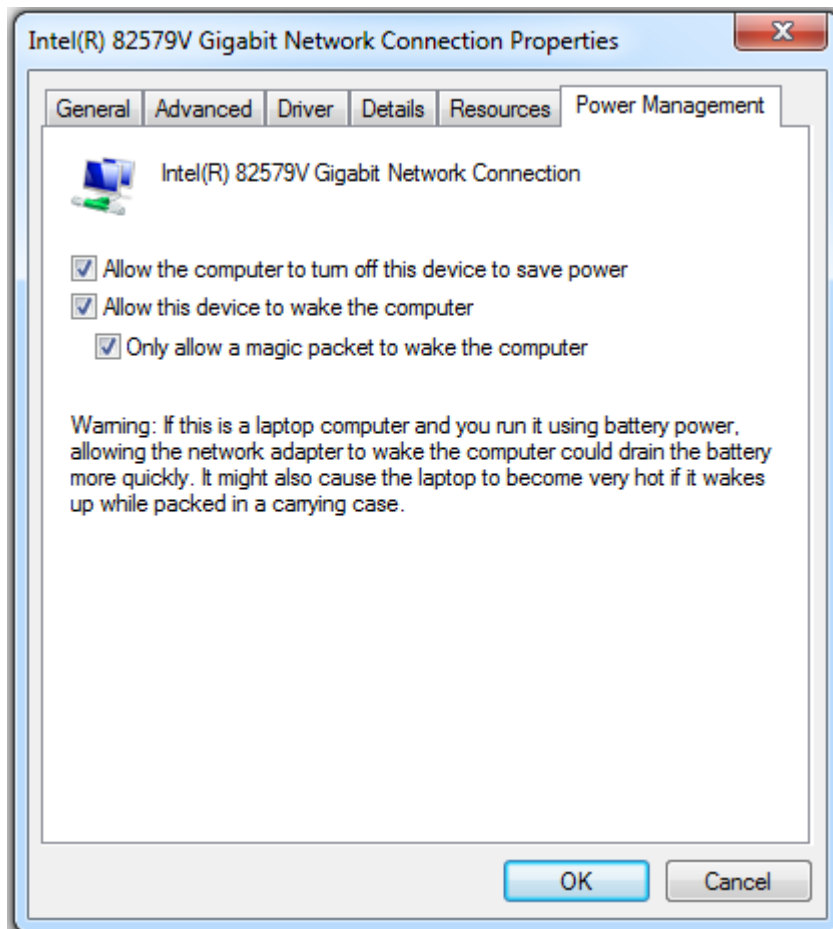
(right click My Computer -> select Manage -> choose Device Manager -> select Network Adapter option -> Right click on the network card ->

[a] select Advanced tab -> ensure both Wake on Magic packet and Wake on Pattern match are enabled.

[b] Next select Power Management tab -> check all three options are checked)

Below are the snapshots of the same:





3. From TaskForceCO2 console make sure that remote PC to be waked up is '*Licensed*' before using Wake Up functionality.

There are few reasons that might cause problems while waking up a remote system:

1. Few Motherboards supports Wake Up option only on standby mode. To support Wake up after shutdown, board should support S5 wake up option in BIOS.
2. System Motherboards should supports PCI 2.2 (Almost all current motherboards supports this). For motherboards without PCI 2.2 support, a separate WOL connector along with an appropriate network adapter should be connected.
3. Most routers support WOL function. For some routers, Network Admins should configure the router (port forward) to allow subnet directed broadcasts across subnets.